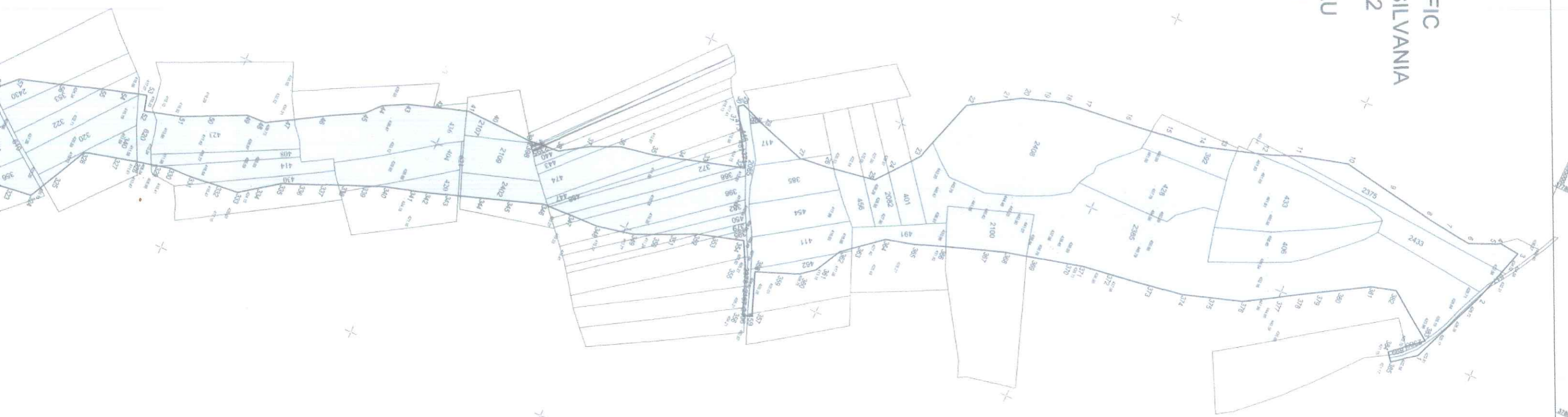
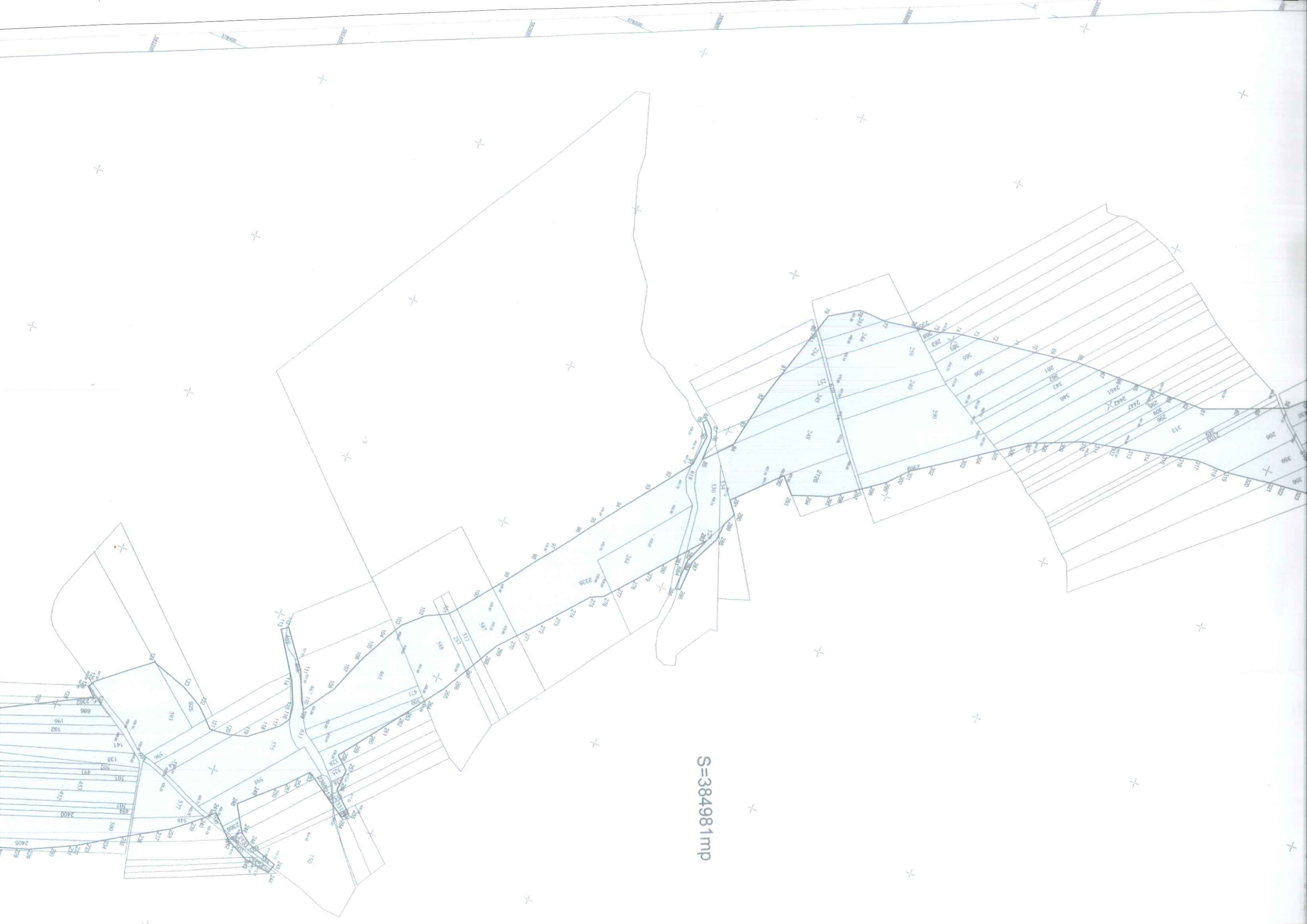
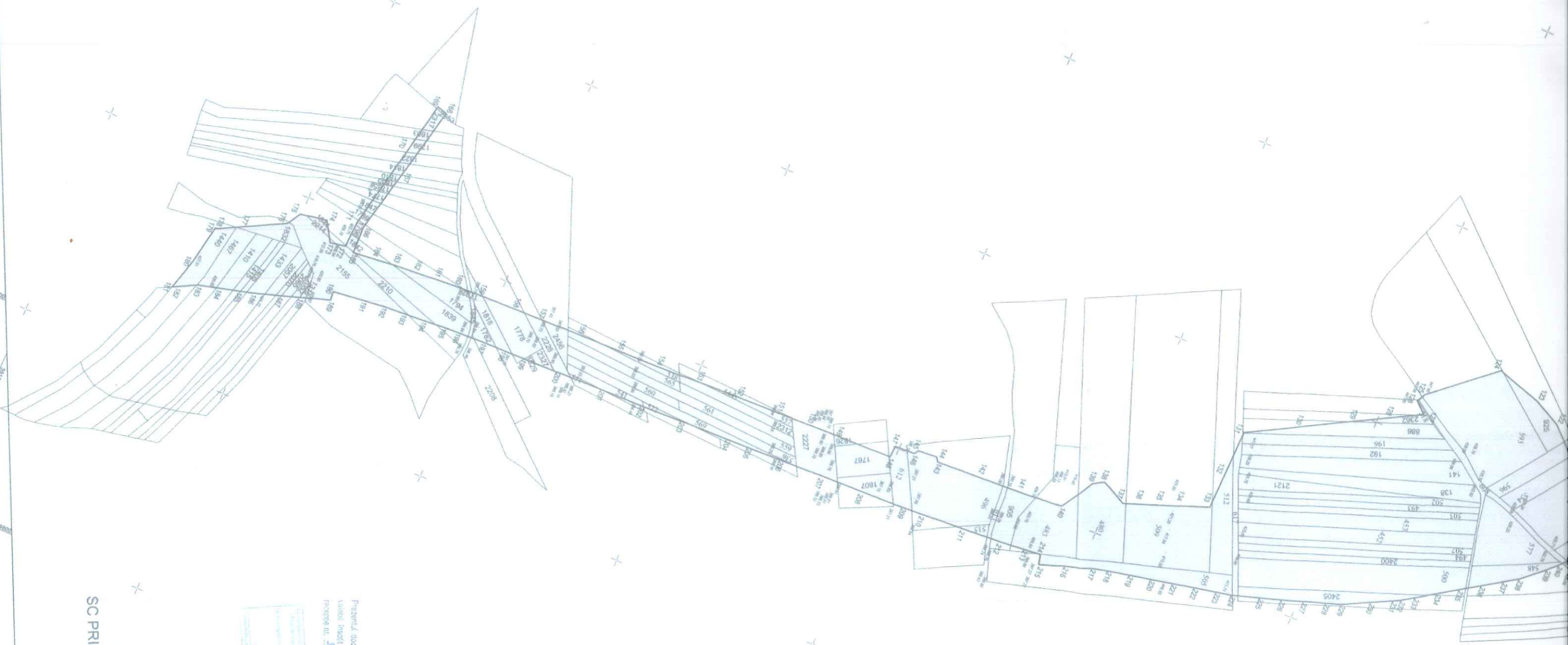


PLAN TOPOGRAFIC
AUTOSTRADA TRANSILVANIA
SECTIUNEA 3A2
COMUNA GIRBAU
SCARA 1:2000





S=384981mp



Prezentul document, redactat în
 limbajul românesc, reprezintă
 versiunea finală a proiectului
 tehnic nr. 233/2018.

233
 2018
 233/2018



EXECUTA
 SC PRIMUL MER